

H.J. ANDREWS FOREST DISCOVERY TRAIL: A PROGRAMMING & RESEARCH JOURNEY

Sarah Kelly

April 4, 2018



- Physical trail built 2011
- Instrumentation & Wifi
- Project leaders
- Interdisciplinary, arts+science
 - Diverse ways of knowing
- Digital delivery



- Research & learning theories
 - Experiential
 - Place-based inquiry
 - Empathy and care
- Ten stops, trail activities
- Pre/post activities
- Data collection



THEN TO NOW

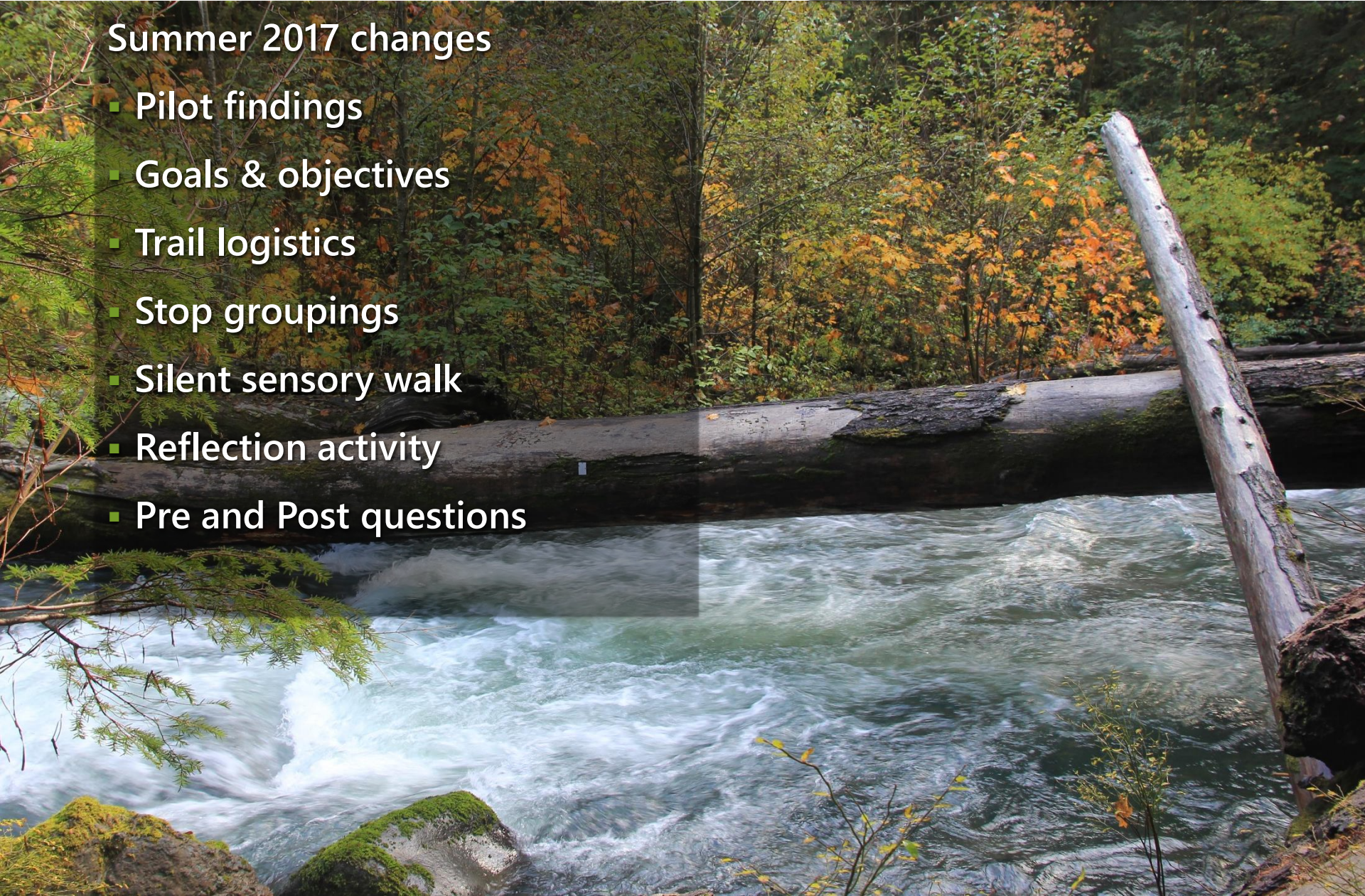
- Summer 2016
 - 1 trip, 29 students
- Spring/Summer 2017
 - 3 trips, 46 students



THEN TO NOW

Summer 2017 changes

- Pilot findings
- Goals & objectives
- Trail logistics
- Stop groupings
- Silent sensory walk
- Reflection activity
- Pre and Post questions



THEN TO NOW

- Fall 2017
 - 2 trips, 33 students
 - Example of DT experience
 - Success?



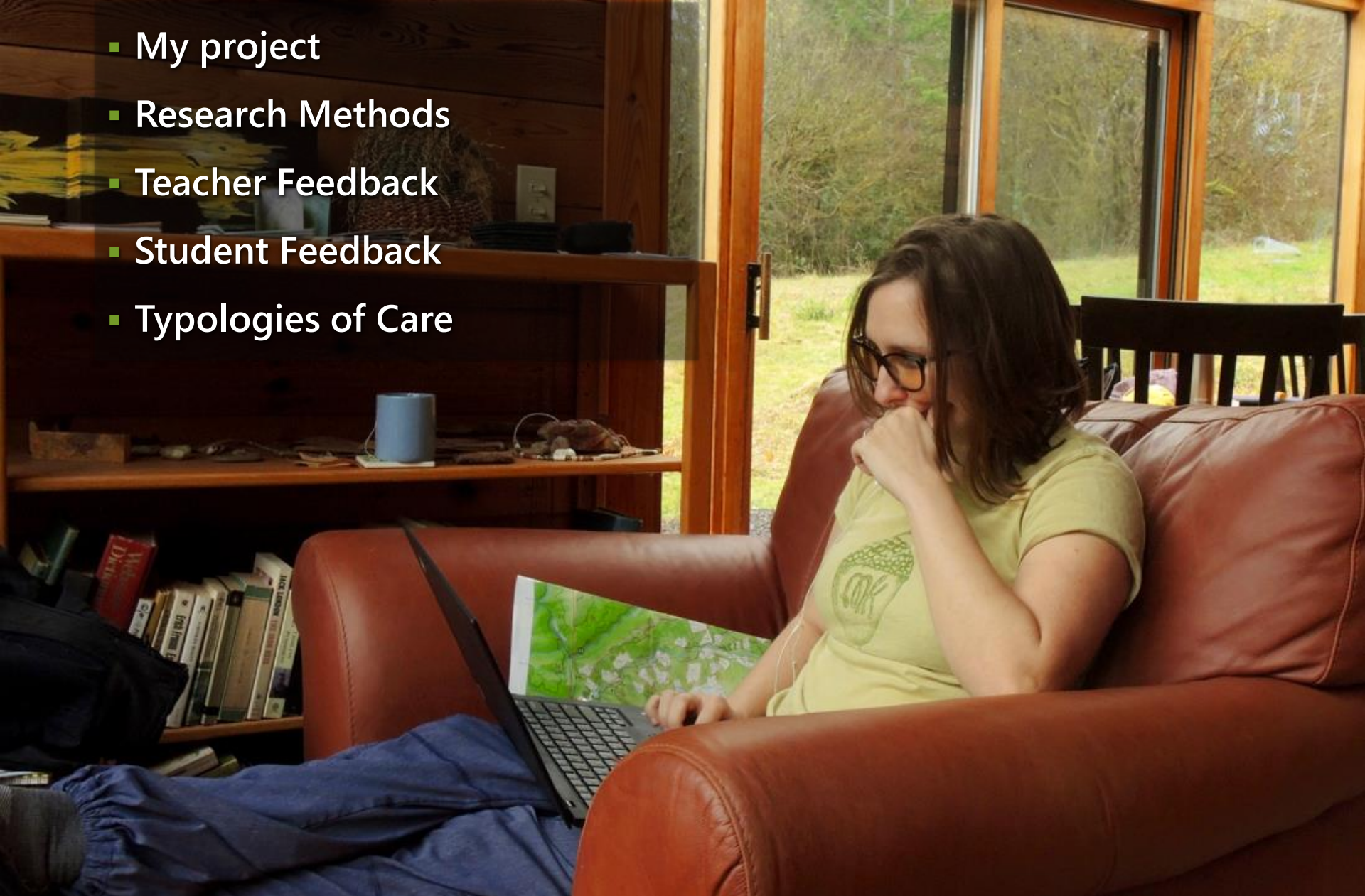
RESEARCH

How does the mixed discipline Discovery Trail Interpretive Experience impact student understanding and care about place?



RESEARCH

- My project
- Research Methods
- Teacher Feedback
- Student Feedback
- Typologies of Care



QUESTIONS & DISCUSSION

Thank you!

