



International Long-Term Ecological Research Network

ILTER's vision is a world in which science helps prevent and solve environmental and socioecological problems

ILTER 1st OPEN SCIENCE MEETING

Hosted by



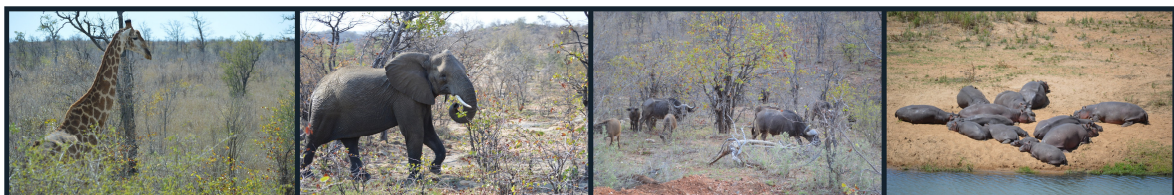
TITLE:

Long-Term Ecosystem Research for sustainability under global changes: Findings and challenges of LTER from local to global scales.

DATE AND VENUE:

9-13 October 2016 in the Kruger National Park, South Africa

The International LTER Network is pleased to announce its first global Open Science Meeting to be held from 9-13 October 2016 in the Kruger National Park, South Africa. Registration will be open to all experts involved in LTER, interested researchers and stakeholders. Topical research themes will be addressed in plenary, break-away sessions and workshops. Experience from site-based to global LTER in one conference at a world-class biodiversity destination, and take advantage of ample opportunities for networking and coordination across ecosystems. ILTER will also use the opportunity to engage a range of powerful international partners of LTER in global change research and policy. Various field trips to South African LTER sites will be organized. Further announcements will follow soon. Remember to diarize the dates.



Themes:

Proposed fixed themes:

- Nitrogen impacts on ecosystems structures and functioning.
- Carbon and water cycles under climate change.
- Towards sustainable usage of ecosystem services (local, regional & global).
- Drivers of biodiversity across scales.
- Data integration and interoperability enabling global scale ecosystem research and linking with environmental monitoring.
- Linking local, regional and global Earth system observations and models .

Theme for all other issues:

- Open call working title: Emerging issues and challenges for ecosystem research.

Programme overview:

Sunday: Arrival

- Welcome evening program.

Monday: Science

- All day: plenary and parallel sessions

Tuesday: Science focusing on partner networks and partnerships

- The ILTER's partners include GEO-BON/GEOSS, PECS, UNESCO-IHP, GLP and other international organizations.
- World cafe on emerging issues.

Wednesday: Science

- Morning: optional short excursion to Kruger National Park research sites.
- Afternoon: parallel sessions.

Thursday: Science

- Morning: parallel and closing sessions.
- Afternoon: departure.

To be followed by a 2-day ILTER Coordinating Committee closed meeting from 14-15 October 2016.



Sponsors:

